

Garage Computer

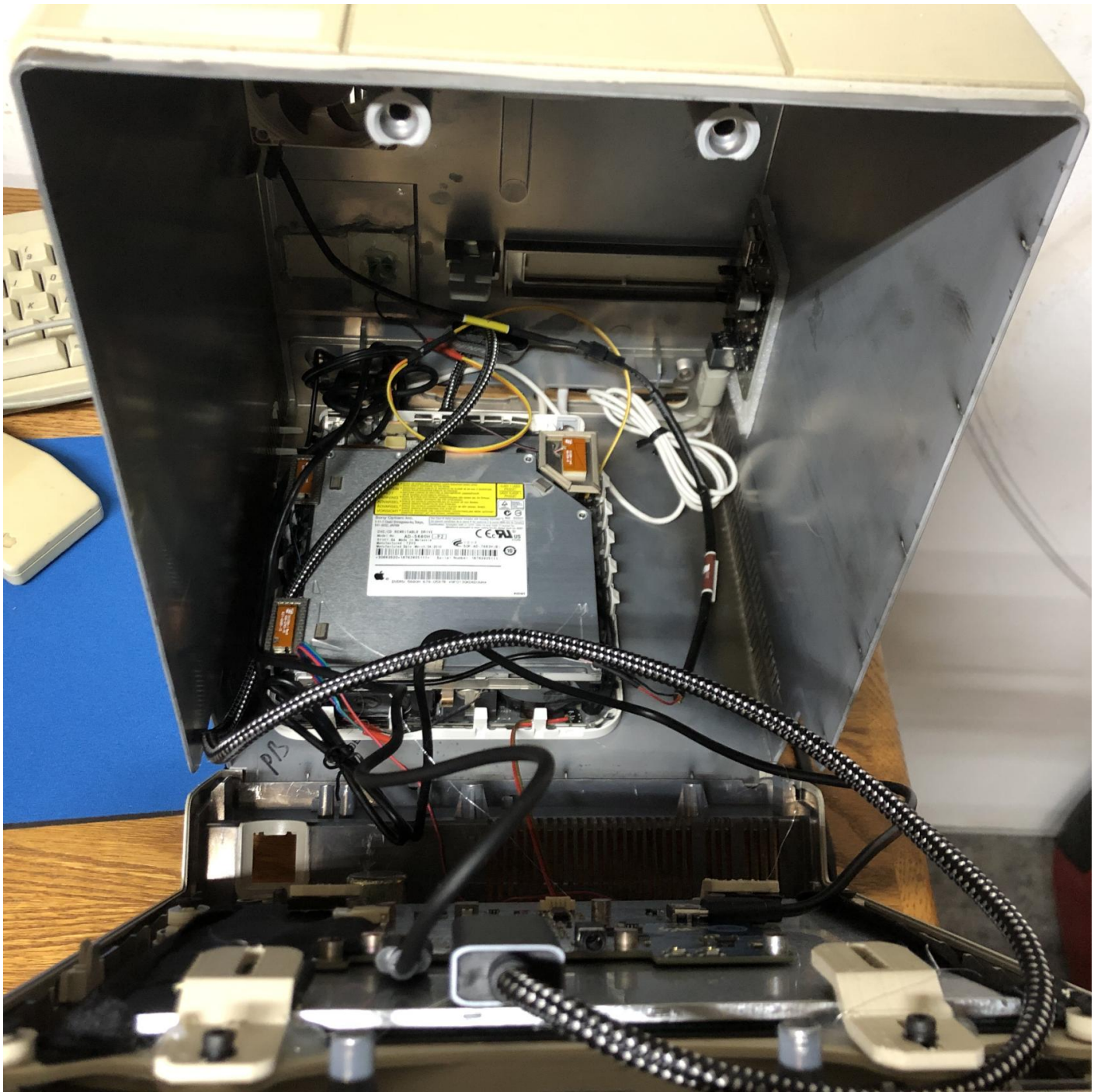
Built a computer to use for music (PlexAmp app) in the garage.

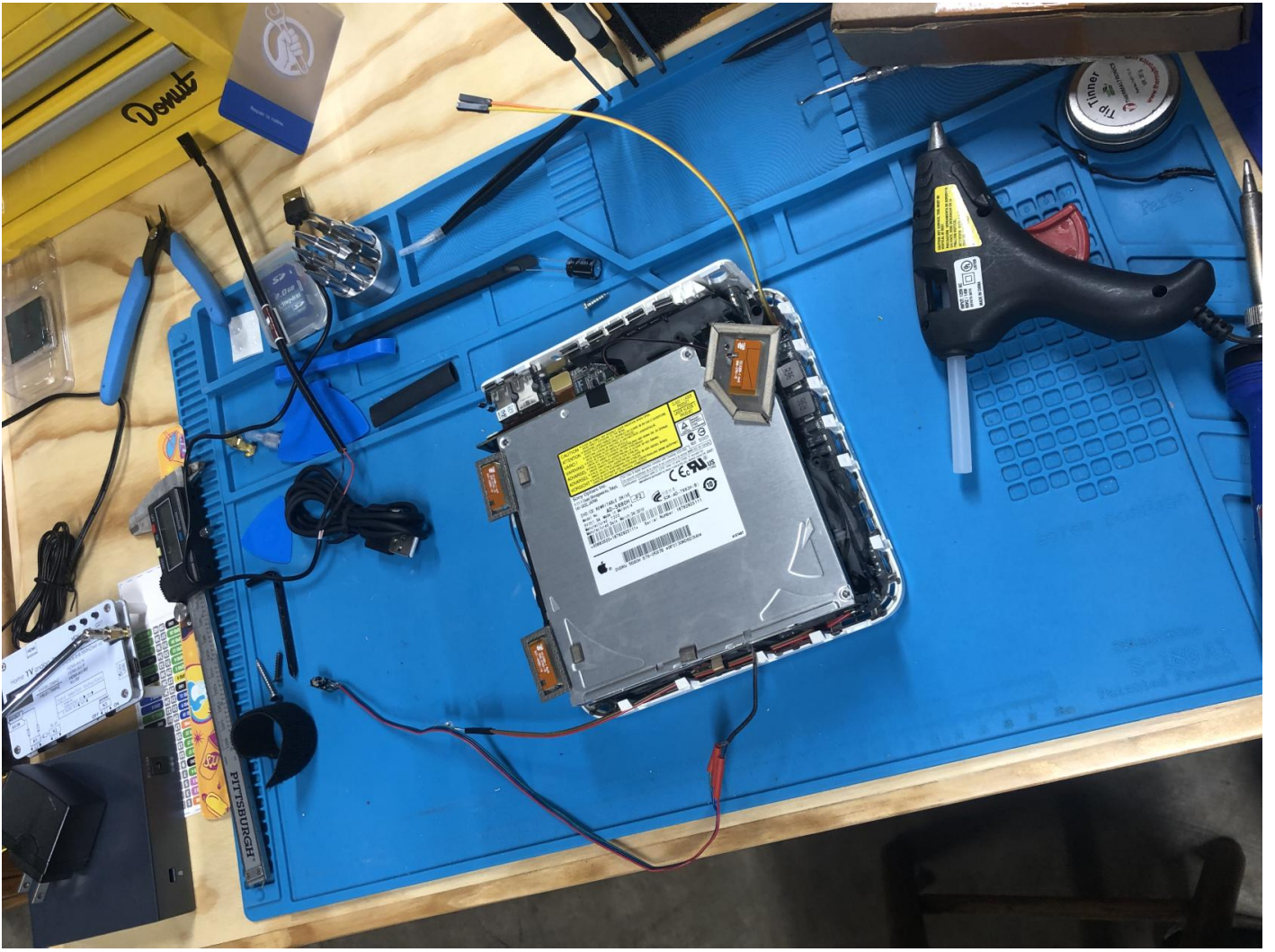
- I was gifted a 2009 Core2Duo Mac mini with 4GB of memory and an SSD.
- Installed Q4OS Linux for something lightweight that feels up-to-date and snappy on this older hardware.
- I decided to use an empty Macintosh SE FDHD shell I had. The original computer is still in use inside a clear/transparent MacEffects case.
- For screen I purchased a [Waveshare](#) 8" 768x1024 IPS touchscreen LCD.
- I printed [brackets](#) to mount the screen in the front of the Mac SE shell.
- I removed the Mac Mini upper shell and extended the power LED so it could be attached to old HDD activity hole. Added wire to move/extend the power button to the rear of the Mac SE shell.
- Created some 3D designs in TinkerCAD to mount the button and fill the rear holes. Also created a mount for 60mm Noctua rear exhaust fan.
- Made the needed USB->3Pin fan header adapter.
- For keyboard and mouse. I used an original Apple ADB keyboard and mouse with a "[Retro USB](#)" adapter to convert the older input devices to USB.

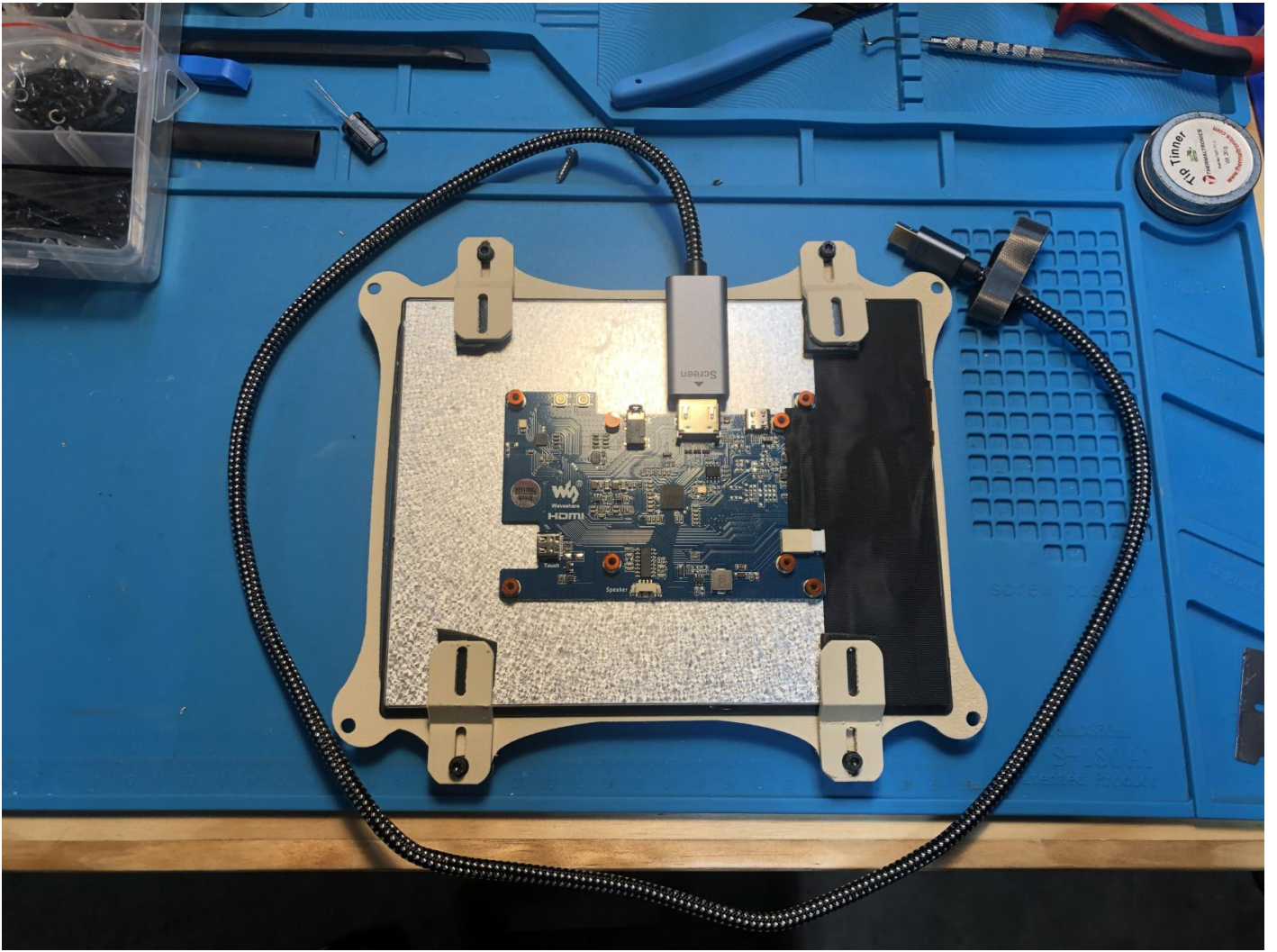


















Apple Computer, Inc.
Cupertino, California



Macintosh SE

UL Listed
Type II Equipment
100-240V
50-60Hz
2A

CAUTION
WARNING

To prevent electrical shock, do not remove cover.
No user-serviceable parts inside. Refer servicing
to qualified service personnel.
This product complies with DHS Rules, 21 CFR,
Subchapter J, applicable at date of manufacture.

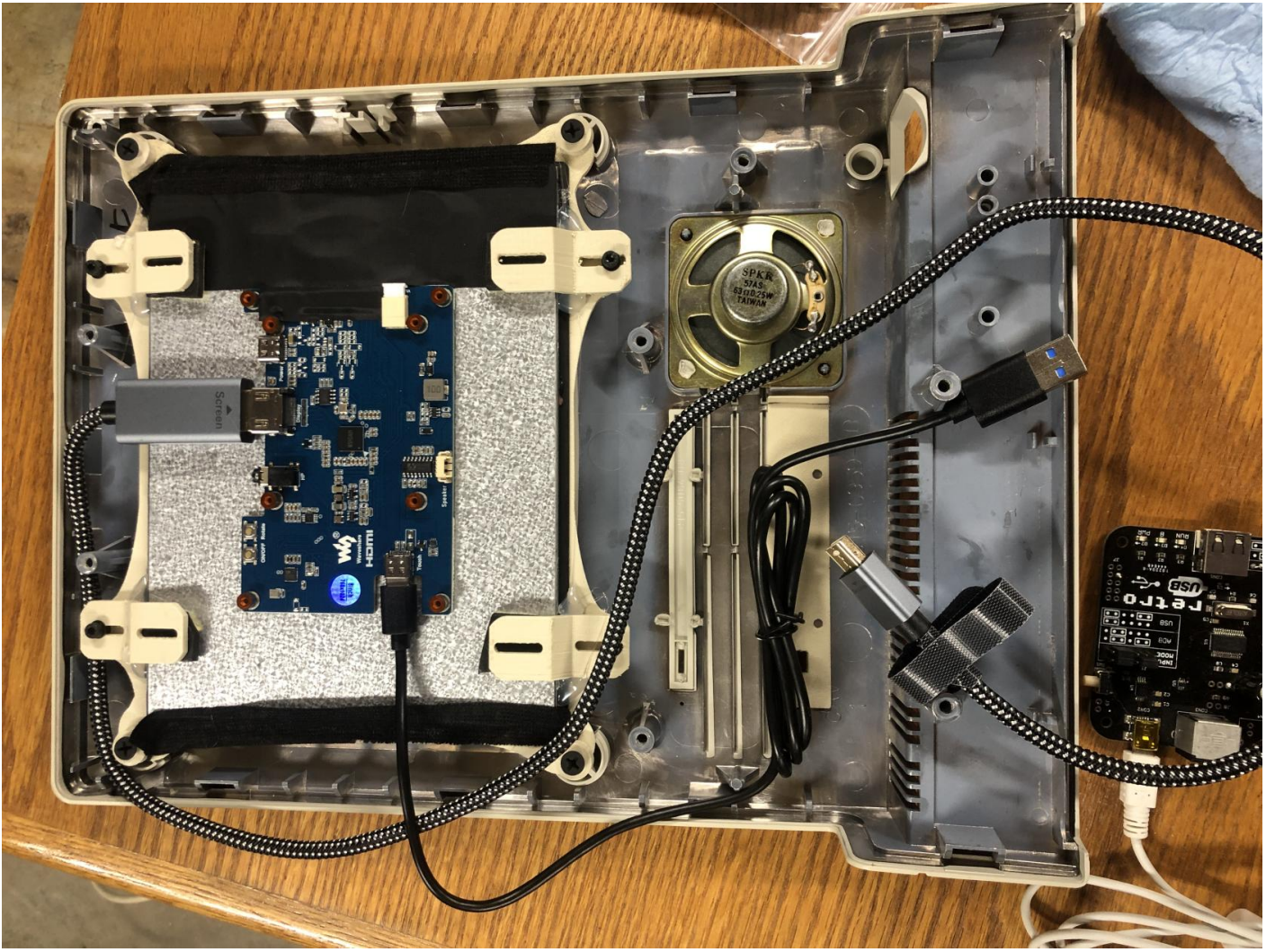
FCC ID: B6568RH501

Certified to comply with Class B limits, Part 15
of FCC Rules. See instructions if interference to
radio reception is suspected.

© 1988 Apple Computer, Inc. Apple, the Apple logo and Macintosh
are registered trademarks of Apple Computer, Inc.

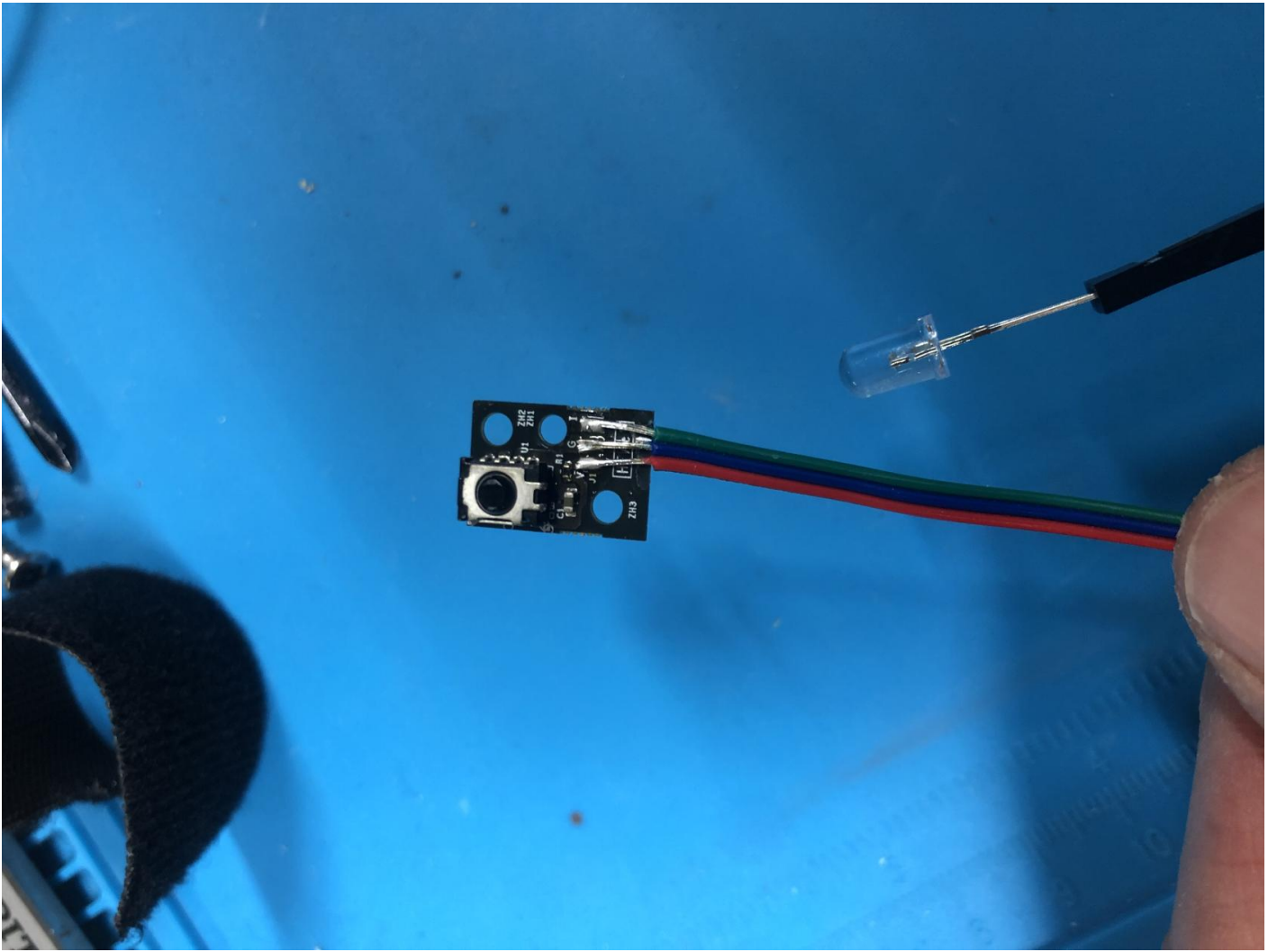
02
F0107KB02

Input voltage range is
self-setting from 100-240V

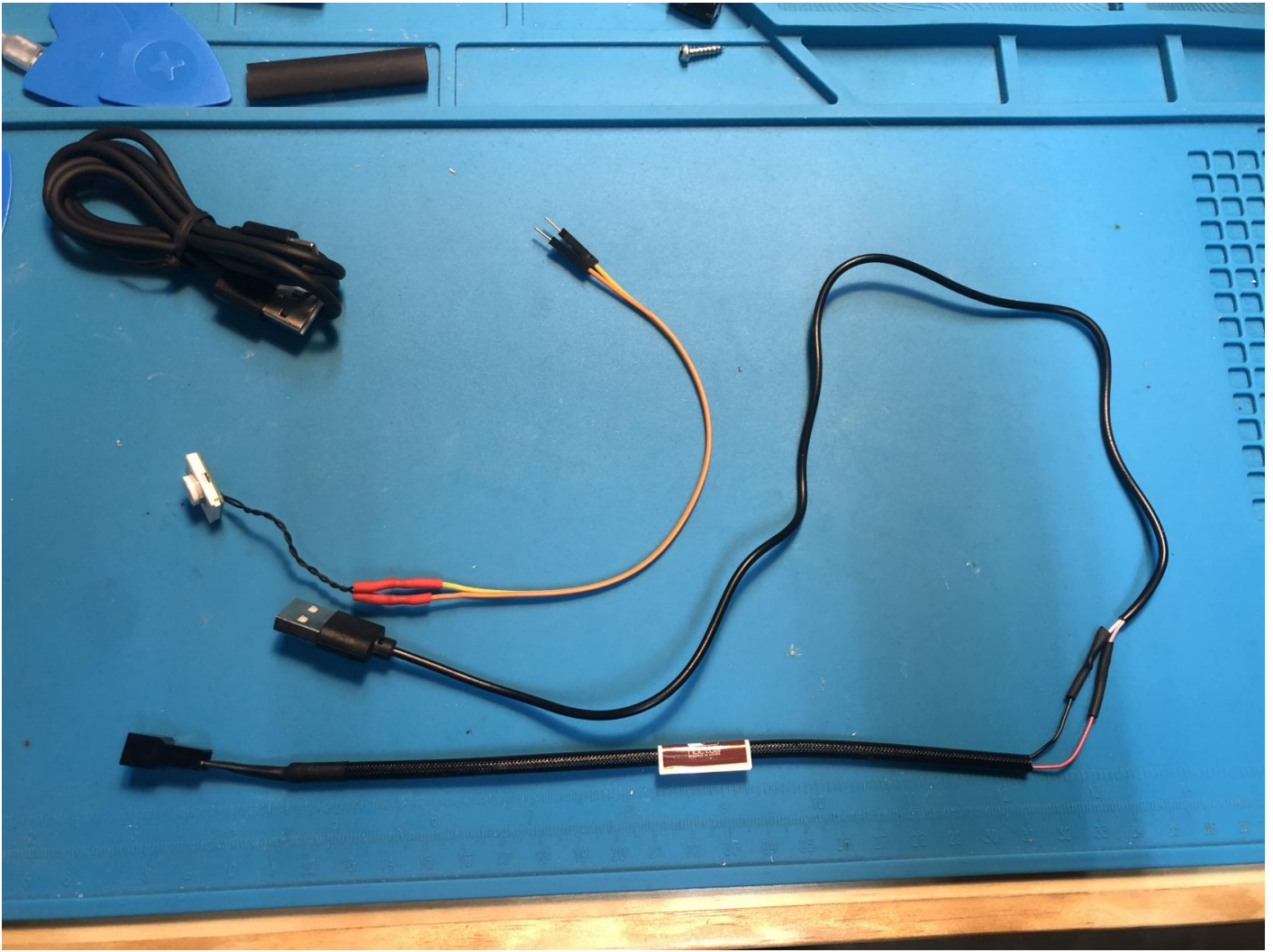




Above you can see the floppy insert I made to mount the IR remote receiver.



Above is the extended IR module with new longer wires.



Above are the extended power button and USB fan power cable.

Revision #9

Created 2026-01-01 20:50:49 PST by Aaron

Updated 2026-01-07 17:14:12 PST by Aaron